

# Application and biomechanics of microimplants

• **Considerations**

(biomechanical and anatomical)

• **Location**

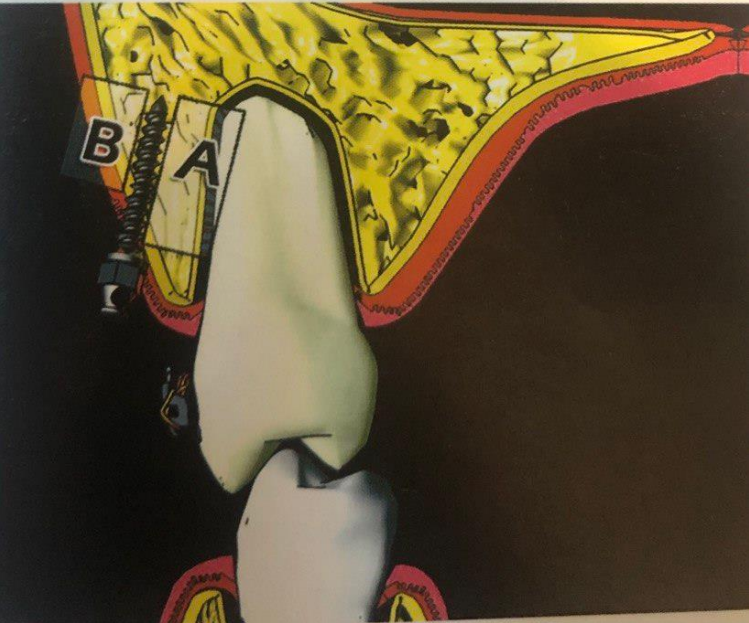
• **Implant size**

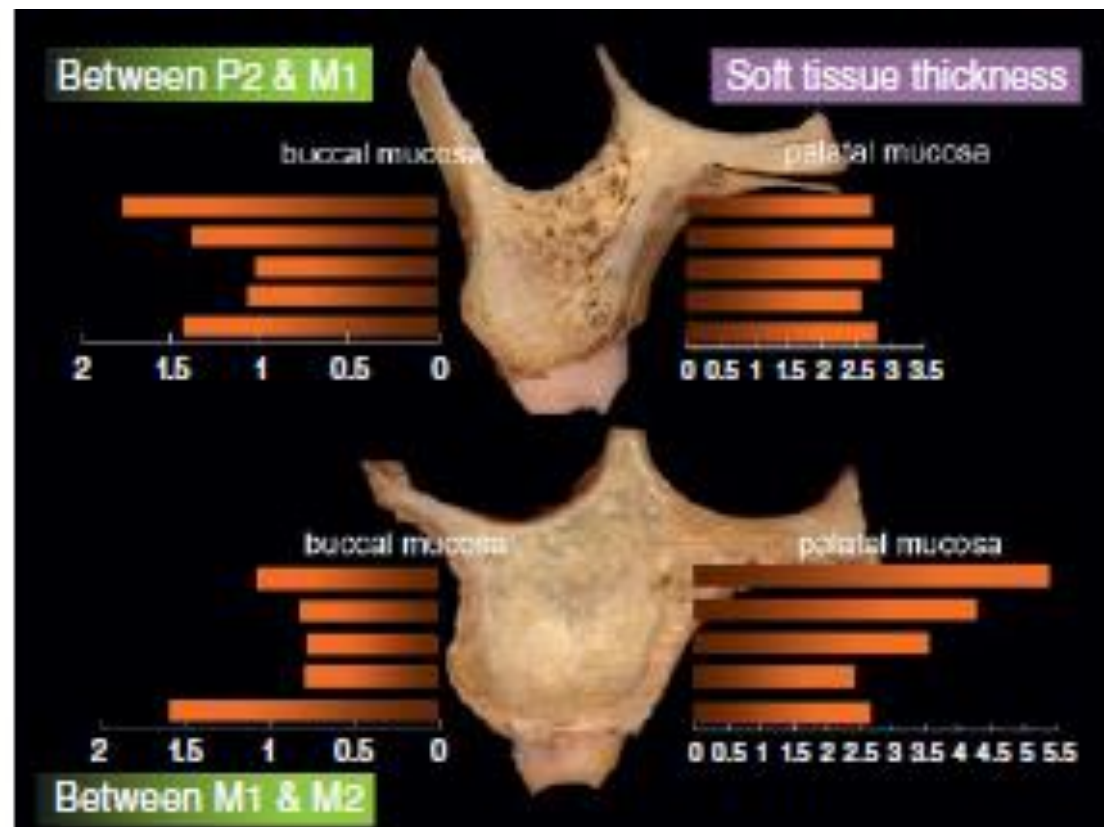
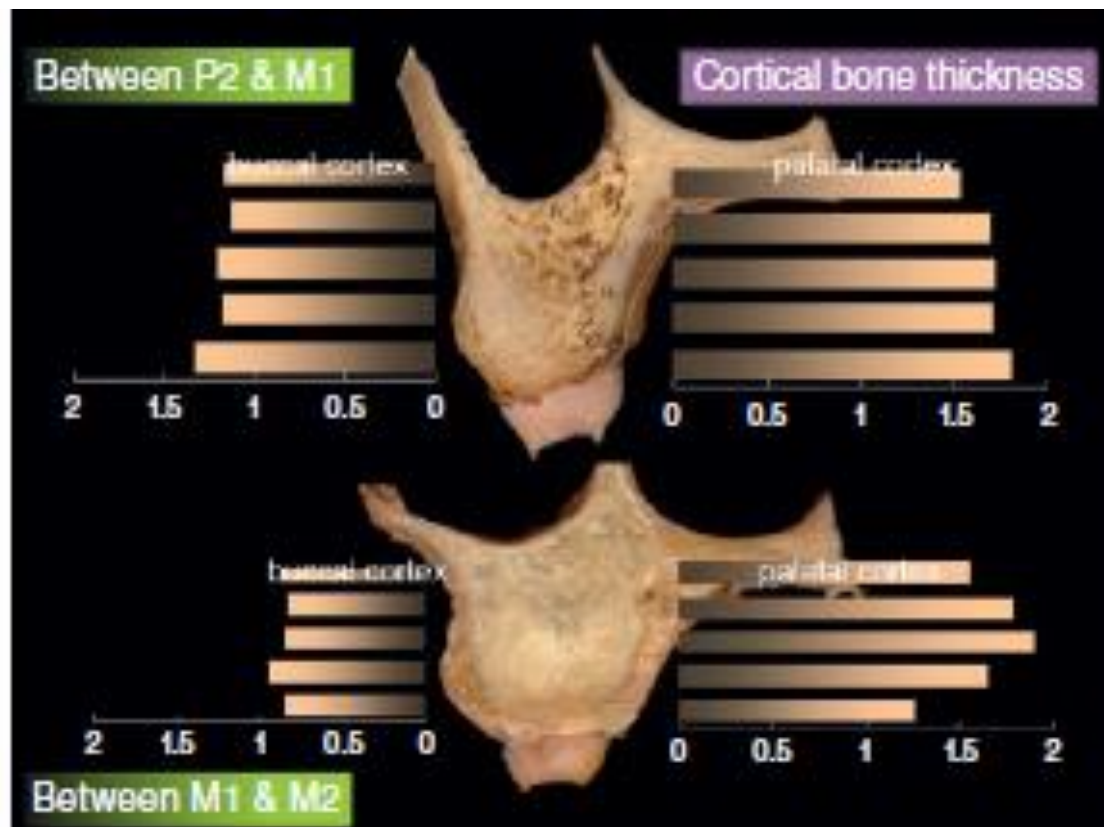
• **Implant site**

Perpendicular



Diagonal





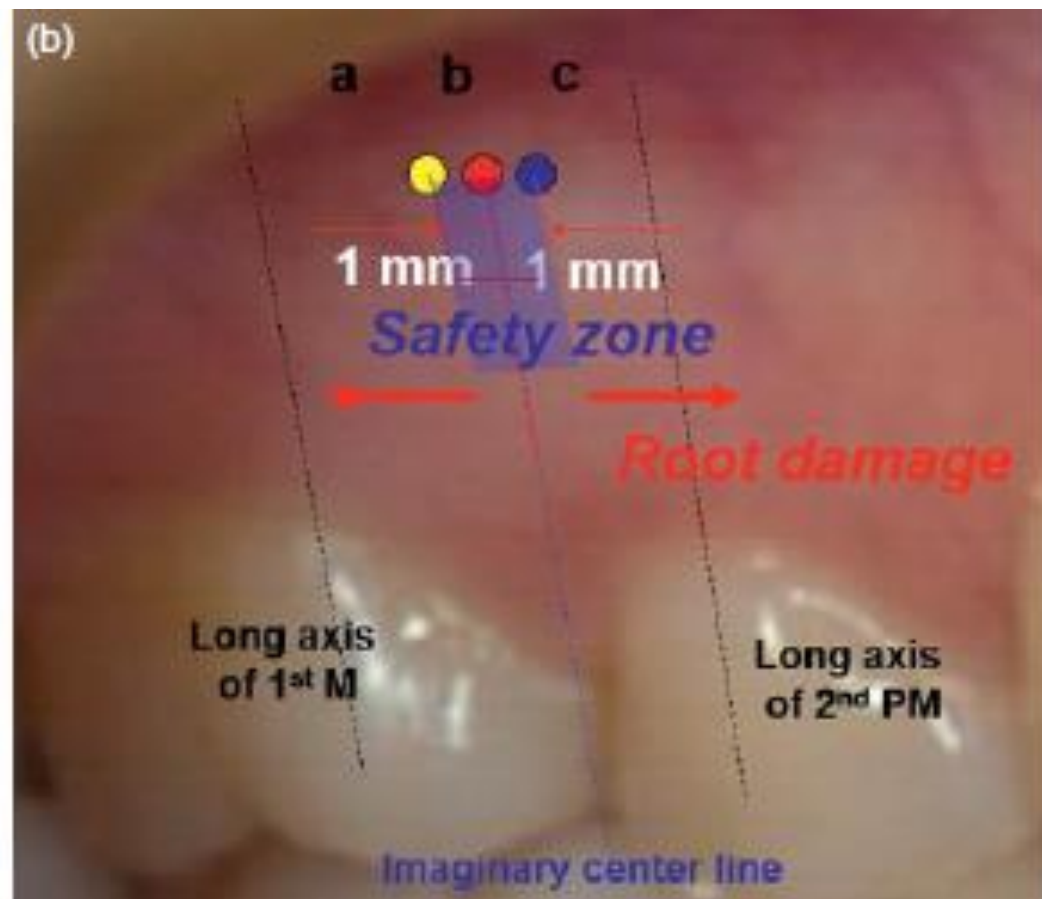
## Maxilla

Level	2 mm		4 mm		6 mm		8 mm	
	Mean	SD	Mean	SD	Mean	SD	Mean	SD
CI-CI	1.70	0.42	2.09	0.62	2.47	0.74	3.21	1.00
CI-LI	1.41	0.36	1.58	0.52	0.91	0.64	2.19	0.66
LI-C	2.01	0.48	2.58	0.60	2.92	0.77	3.42	1.04
C-P1	2.13	0.59	2.47	0.76	3.01	0.87	3.16	0.80
P1-P2	2.17	0.39	2.81	0.45	3.16	0.59	3.19	0.69
P2-M1	2.49	0.52	3.21	0.64	3.56	0.82	3.98	0.91
M1-M2	1.99	0.53	2.17	0.74	1.92	0.91	2.07	1.13

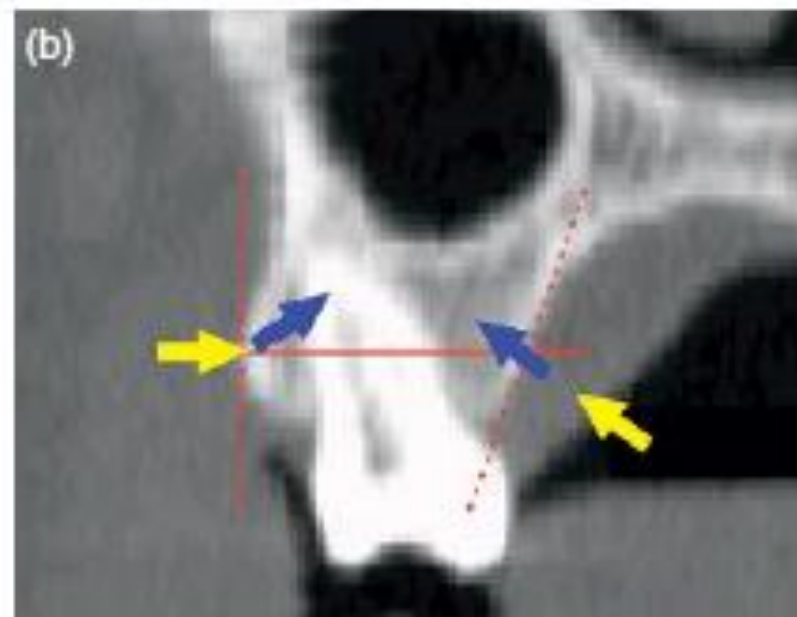
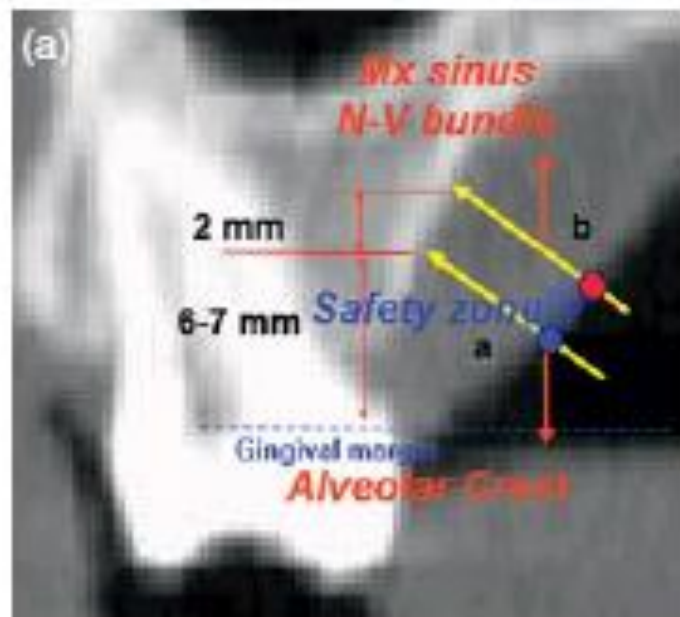
CI, Central incisor; LI, lateral incisor; C, canine; P1, first premolar; P2, second premolar; M1, first molar; M2, second molar.

Level	2 mm		4 mm		6 mm		8 mm	
	Mean	SD	Mean	SD	Mean	SD	Mean	SD
CI	0.00	0.00	0.02	0.09	0.76	0.53	0.52	0.54
LI	0.00	0.00	0.04	0.19	0.48	0.59	0.27	0.48
C	0.00	0.00	0.10	0.29	1.46	0.47	0.43	0.50
P1	0.09	0.28	0.50	0.69	0.72	0.58	0.70	0.70
P2	0.48	0.76	0.52	1.01	1.80	0.84	1.76	0.92
M1 mesial	0.13	0.06	1.25	0.85	1.60	0.90	1.49	0.92
M1 distal	0.30	0.67	1.79	0.92	2.32	1.03	2.40	1.32
M2 mesial	0.14	0.45	1.53	1.01	2.75	0.85	3.27	0.85
M2 distal	0.12	0.06	1.38	0.96	2.58	0.87	2.92	0.95

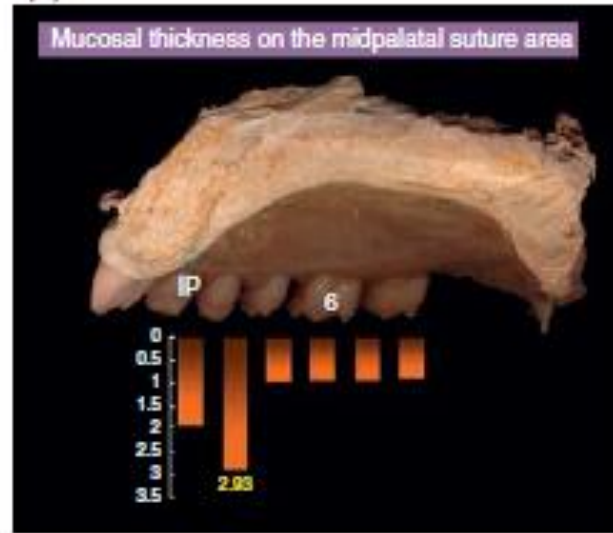
CI, Central incisor; LI, lateral incisor; C, canine; P1, first premolar; P2, second premolar; M1, first molar; M2, second molar.



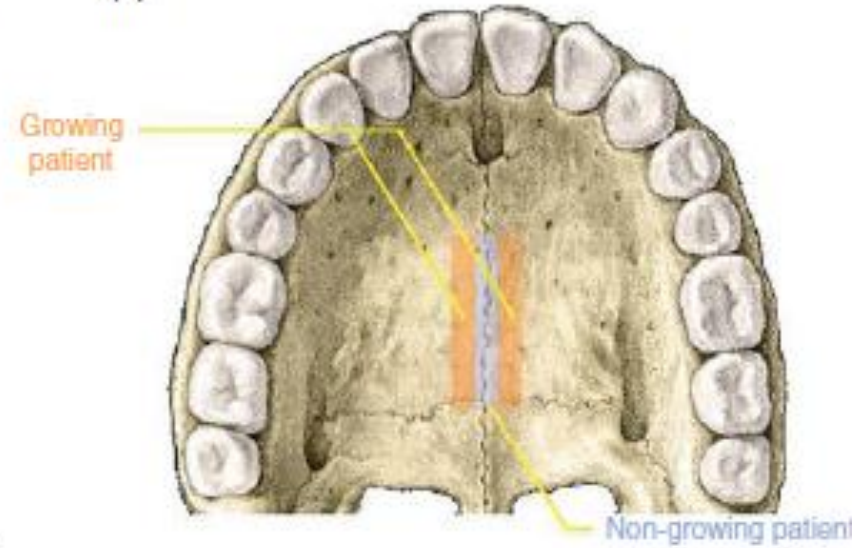




(a)



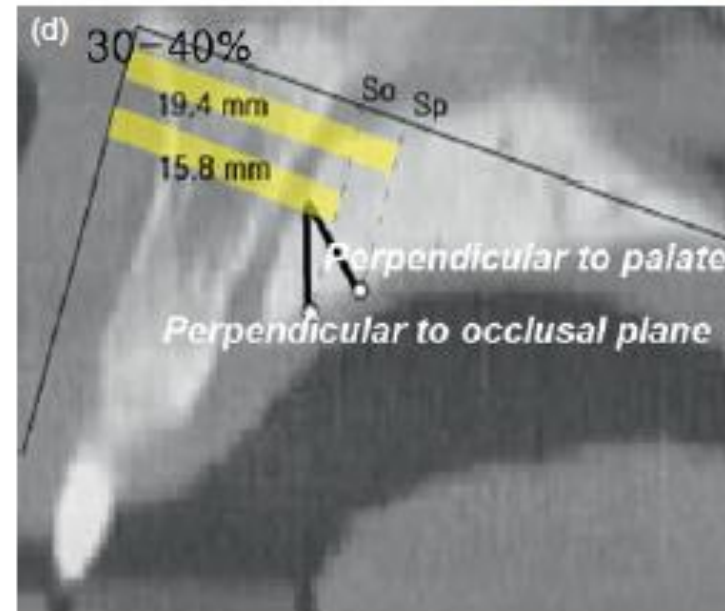
(b)



(c)



(d)



## Mandible

Level	2 mm		4 mm		6 mm		8 mm	
Tooth	Mean	SD	Mean	SD	Mean	SD	Mean	SD
CI-CI	1.31	0.37	1.38	0.36	1.57	0.46	1.80	0.54
CI-LI	1.09	0.29	1.17	0.32	1.22	0.35	1.22	0.32
LI-C	1.39	0.50	1.68	0.46	1.88	0.59	2.03	0.66
C-P1	1.91	0.55	2.40	0.06	2.76	0.76	2.86	0.82
P1-P2	2.53	0.51	3.36	0.59	3.95	0.70	4.10	0.78
P2-M1	2.61	0.58	3.31	0.65	3.57	0.78	3.96	0.81
M1-M2	2.75	0.59	3.25	0.88	3.52	1.13	4.02	1.39

CI, Central incisor; LI, lateral incisor; C, canine; P1, first premolar; P2, second premolar; M1, first molar; M2, second molar.

Level	2 mm		4 mm		6 mm		8 mm	
Tooth	Mean	SD	Mean	SD	Mean	SD	Mean	SD
CI	0.06	0.24	0.21	0.38	0.38	0.47	0.10	0.28
LI	0.00	0.00	0.20	0.34	0.31	0.40	0.06	0.23
C	0.00	0.00	0.19	0.41	0.14	0.33	0.04	0.13
P1	0.07	0.28	0.12	0.29	0.14	0.27	0.27	0.46
P2	0.38	0.79	0.70	0.73	0.86	0.85	1.17	1.02
M1 mesial	0.47	0.71	0.83	0.98	1.08	1.11	0.65	1.72
M1 distal	0.50	0.65	1.09	0.89	1.77	1.25	2.58	1.51
M2 mesial	1.16	1.27	2.83	1.77	4.47	1.88	6.26	1.80
M2 distal	2.44	1.51	4.23	1.72	5.72	2.08	7.26	2.05

CI, Central incisor; LI, lateral incisor; C, canine; P1, first premolar; P2, second premolar; M1, first molar; M2, second molar.



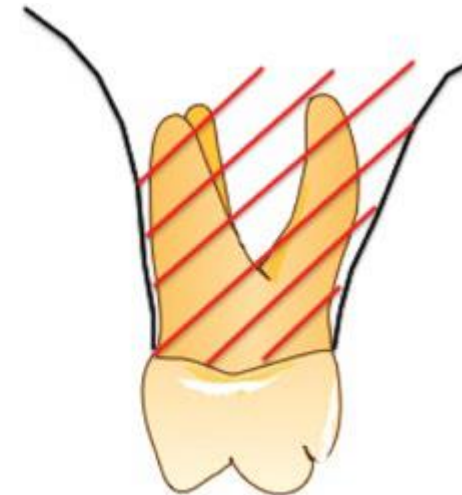
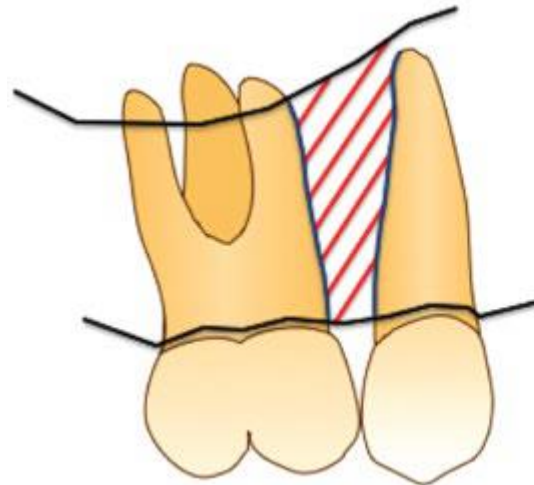


## Implant site selection

Indication driven approach

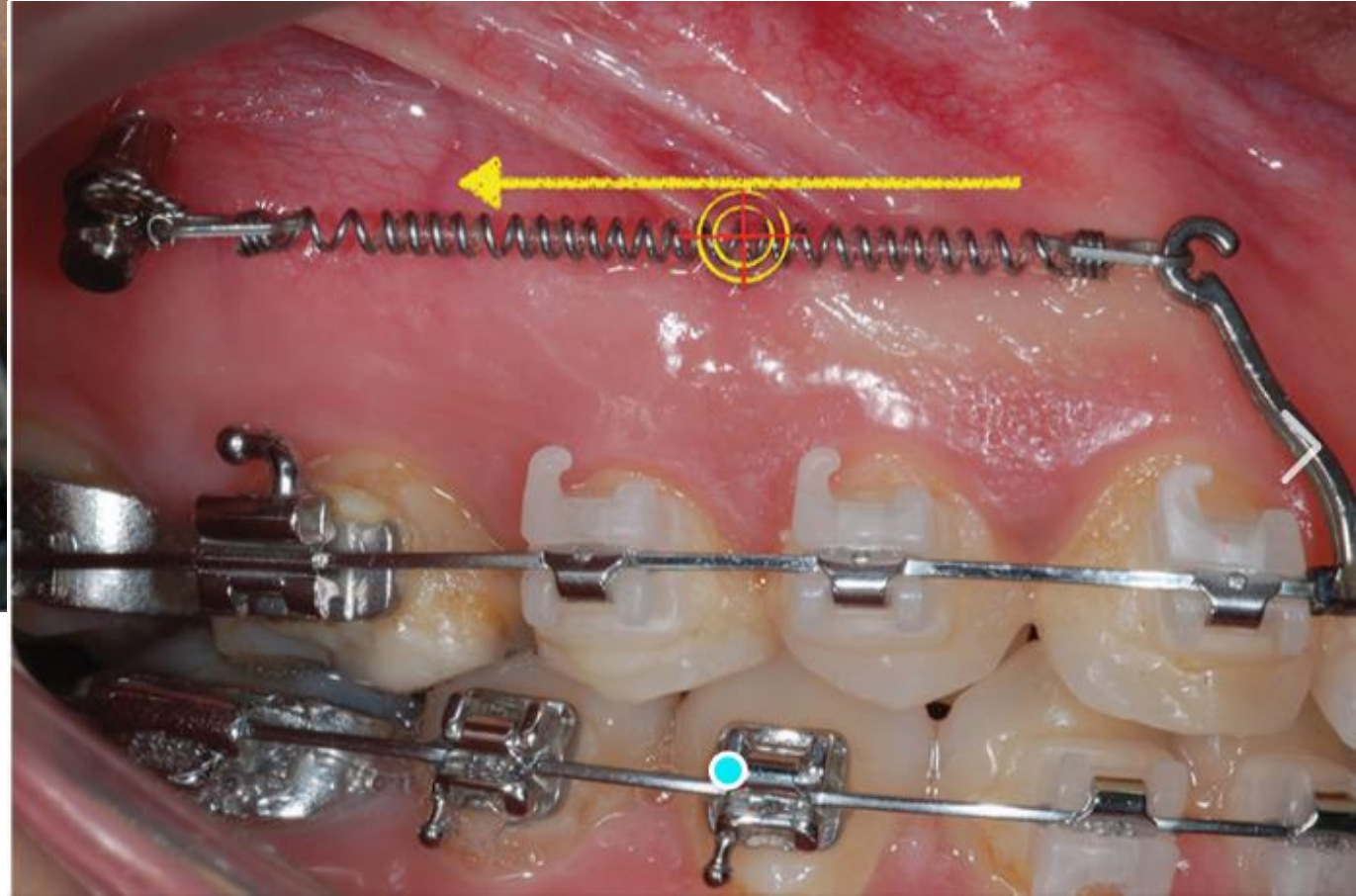


Anatomy driven approach



# Implant sites

Infrazygomatic crest area



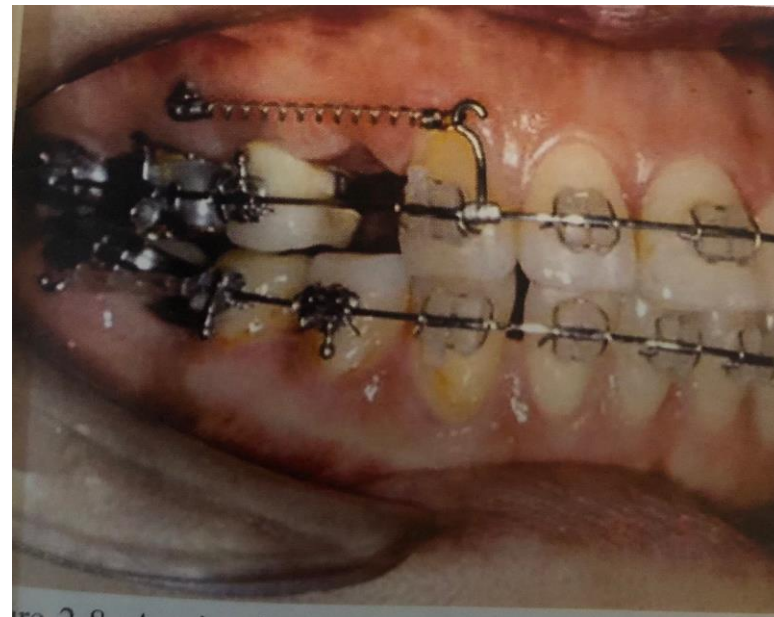
Maxillary tuberosity area



Between first and second molars buccally



Between first and second molars buccally



Between the maxillary canine and first premolar buccally



Between incisors facially

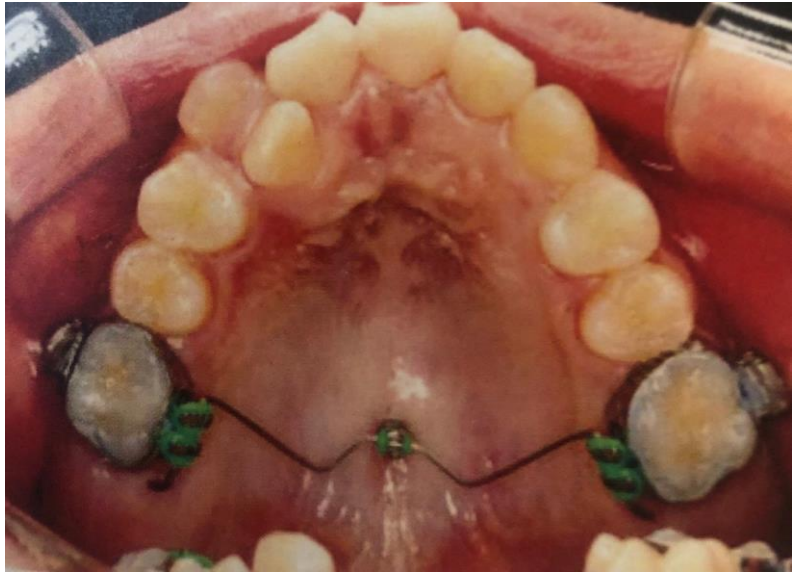




Between second premolar and first molar and  
between first and second molars palatally.



Midpalatal area





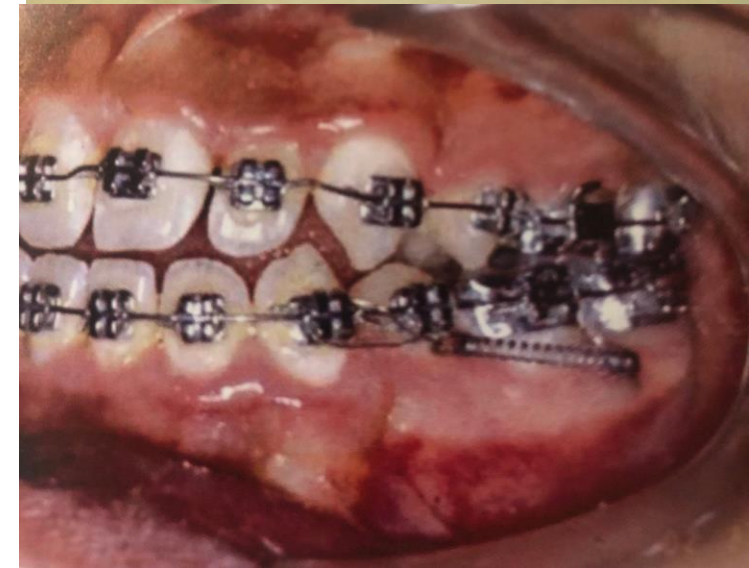


Retromolar area

Between first and second molar buccally



Between second premolar and first molar buccally





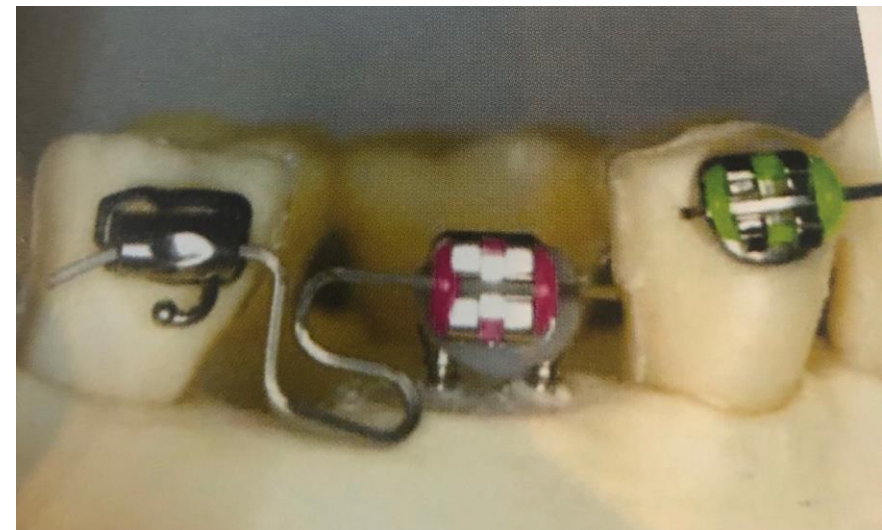
Between  
canine and  
first premolar



Mandibular  
symphysis facially



Lingual site



Edentulous  
area



## Implant failure

Factors:

**Iatrogenic factors:** heat, root injury, initial stability, contamination, negligence, impingement, nerve and artery injury, fracture.

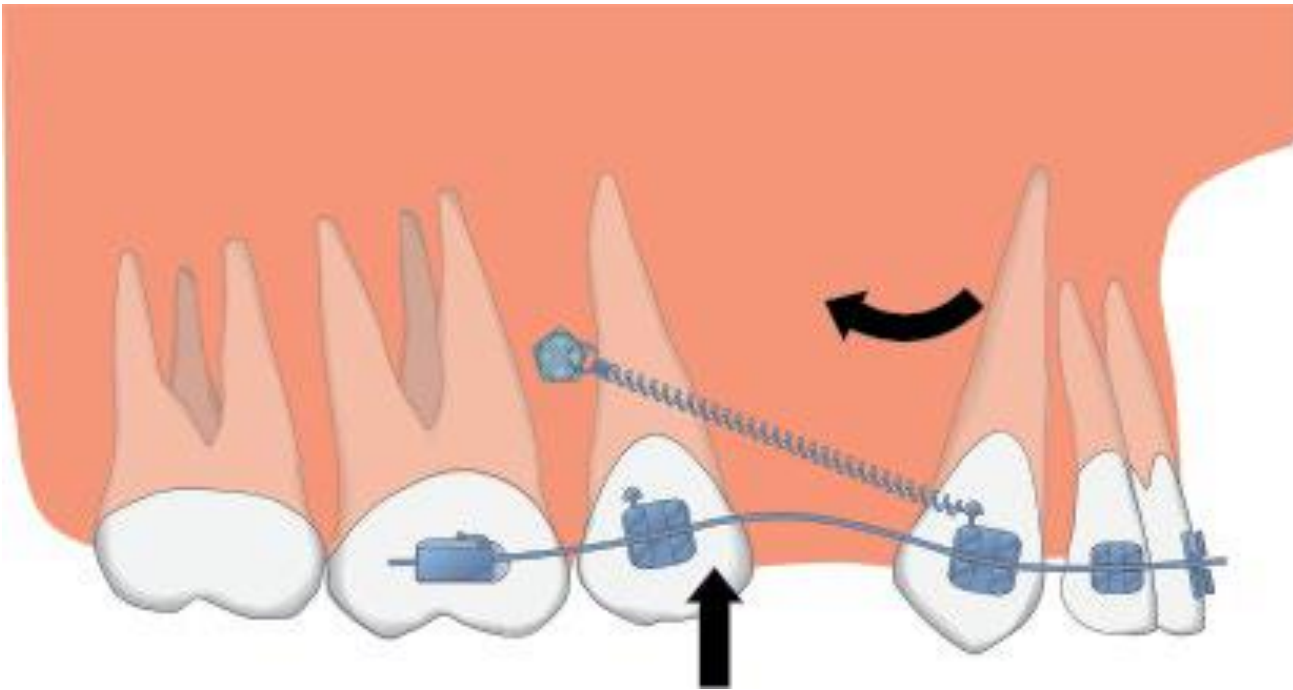
**Host factors:** systemic disease, bone quality, amount of attached gingiva, age, oral conditions.



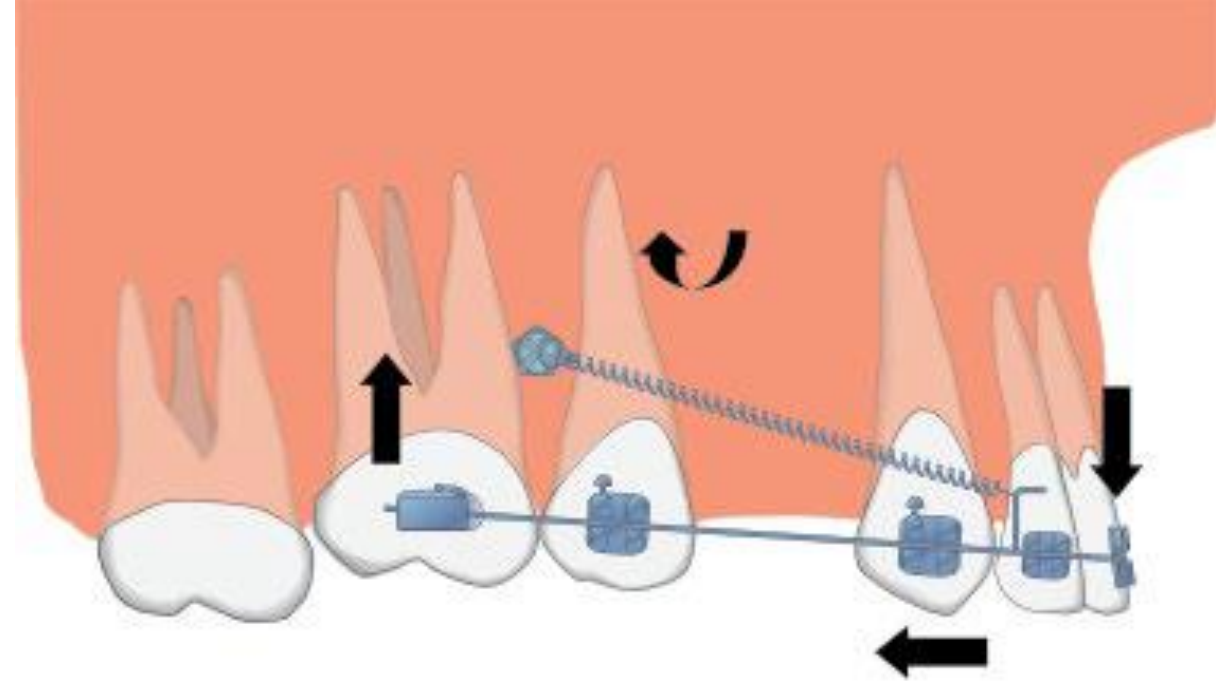




Anterior retraction



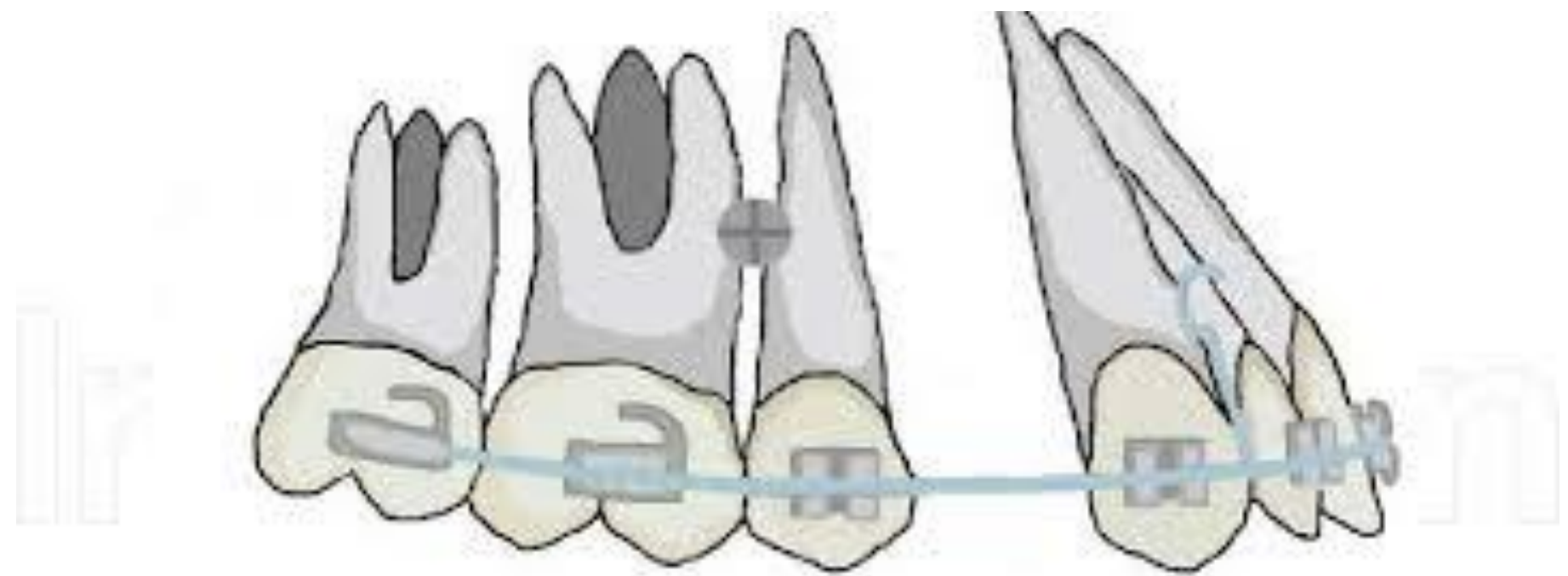
**(a) Flexible archwire**

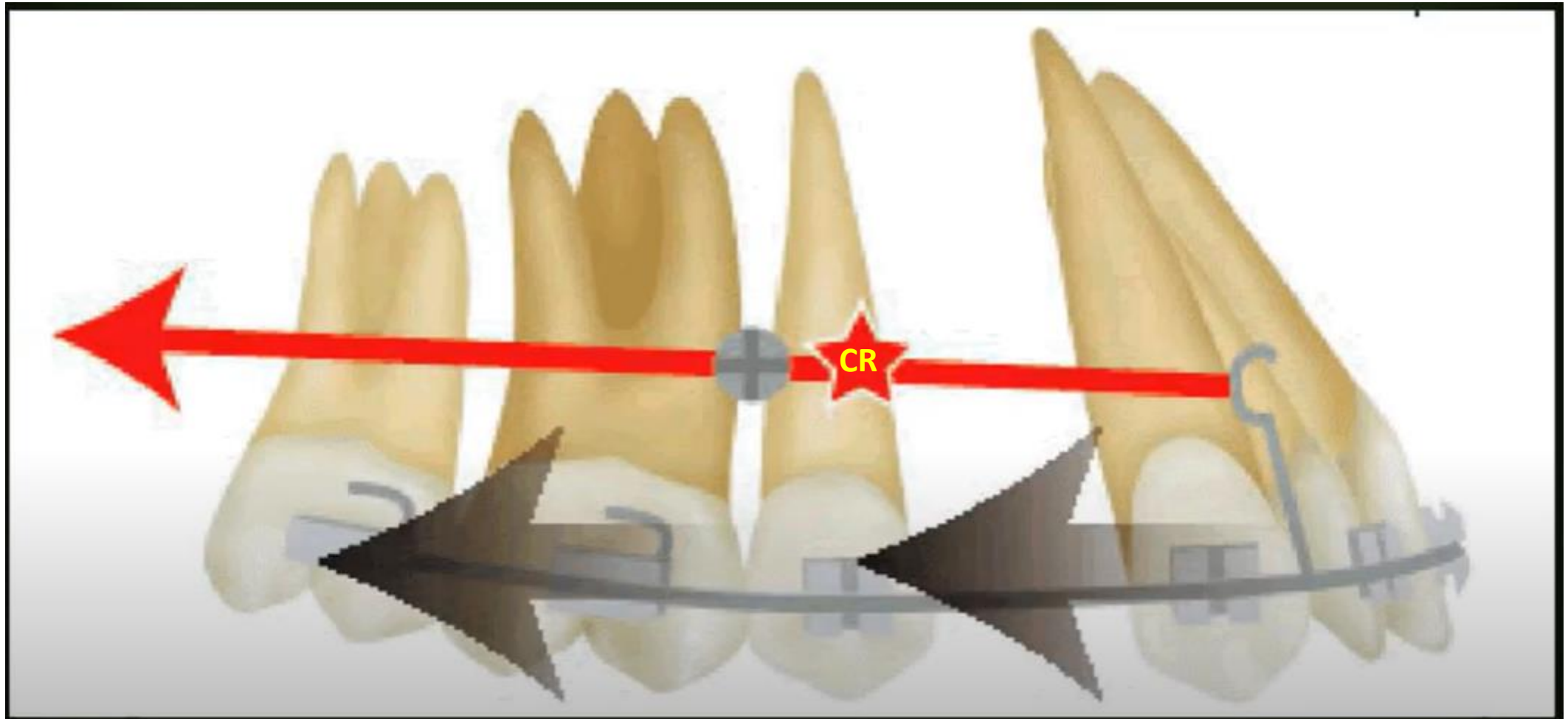


**(b) rigid archwire**

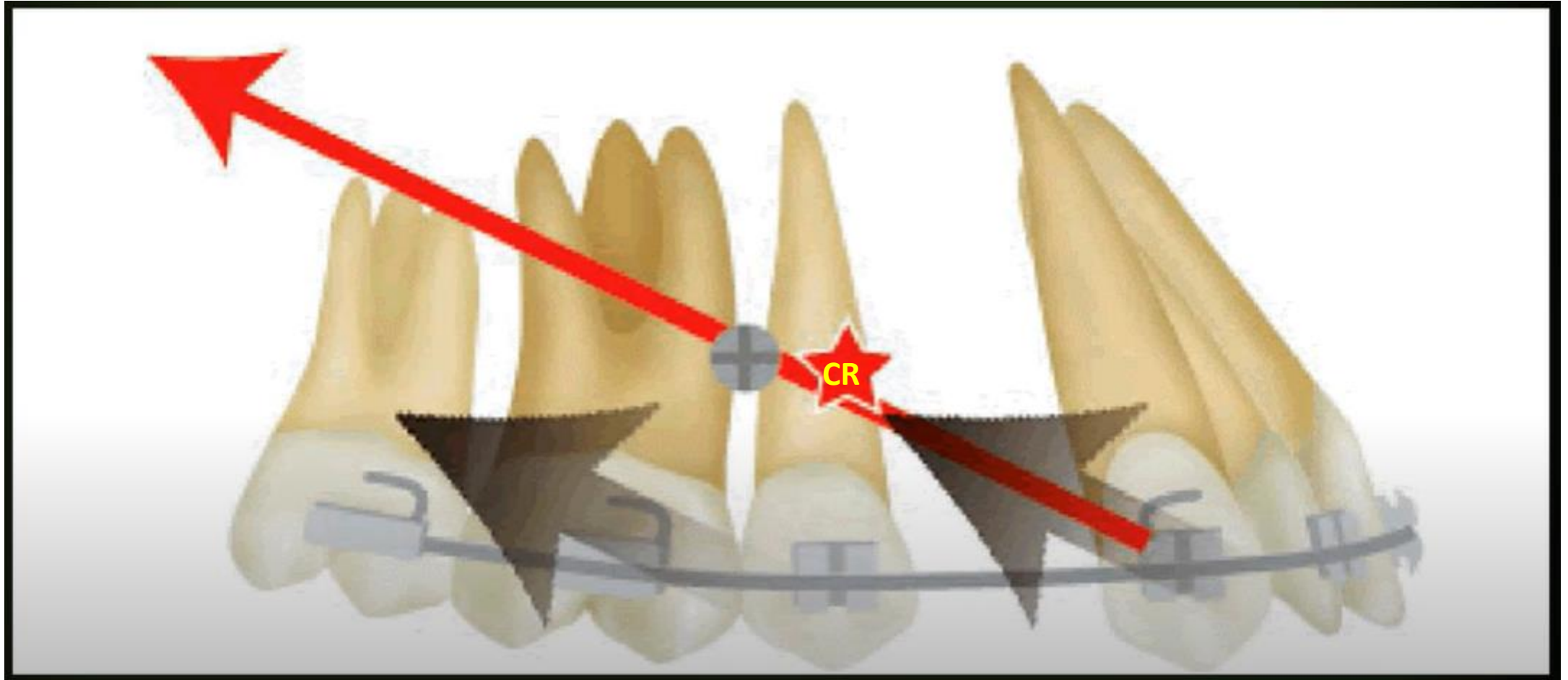
**(a) Flexible archwire: Distal tipping of the canine and a rollercoaster bowing of the archwire occur in scenario.**

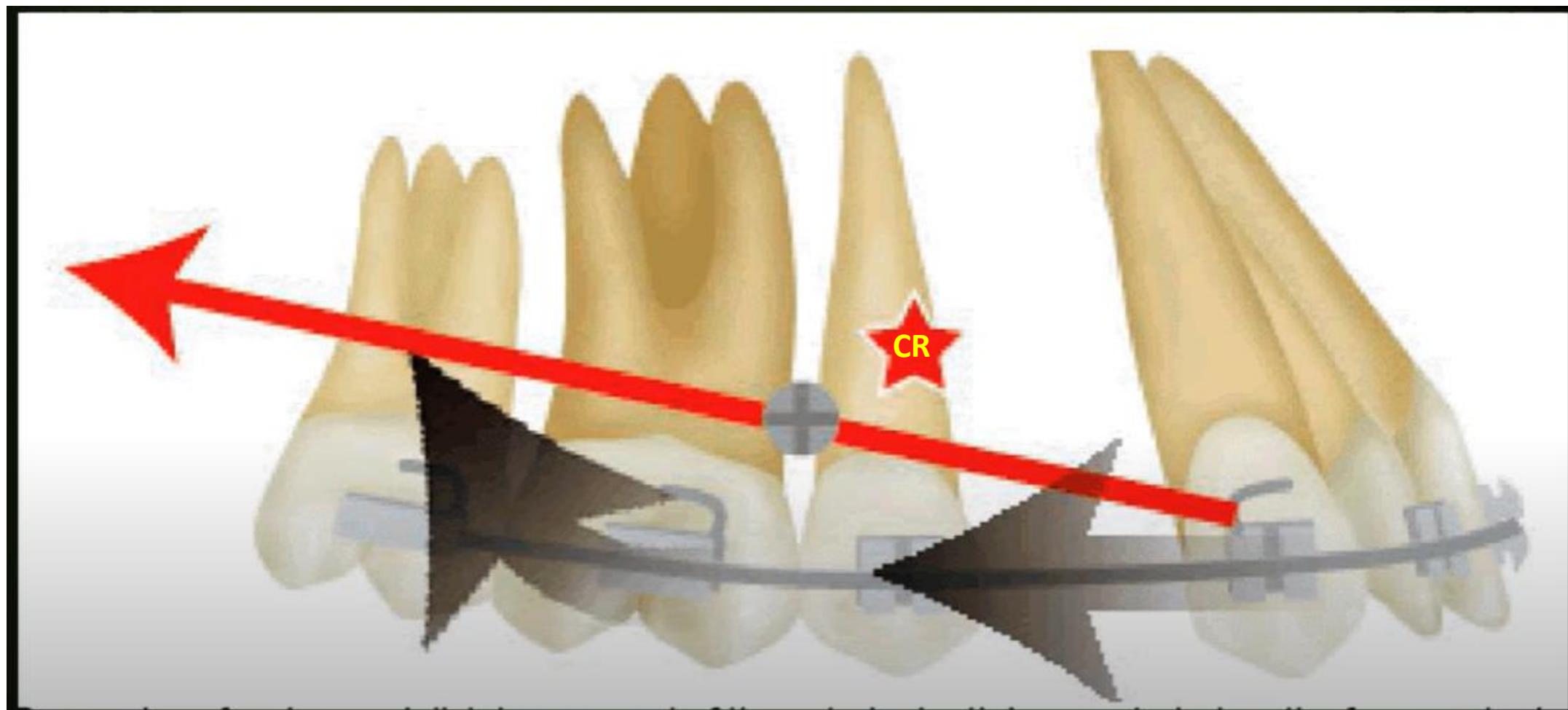
**(b) rigid archwire: predominantly molar intrusion occurs.**

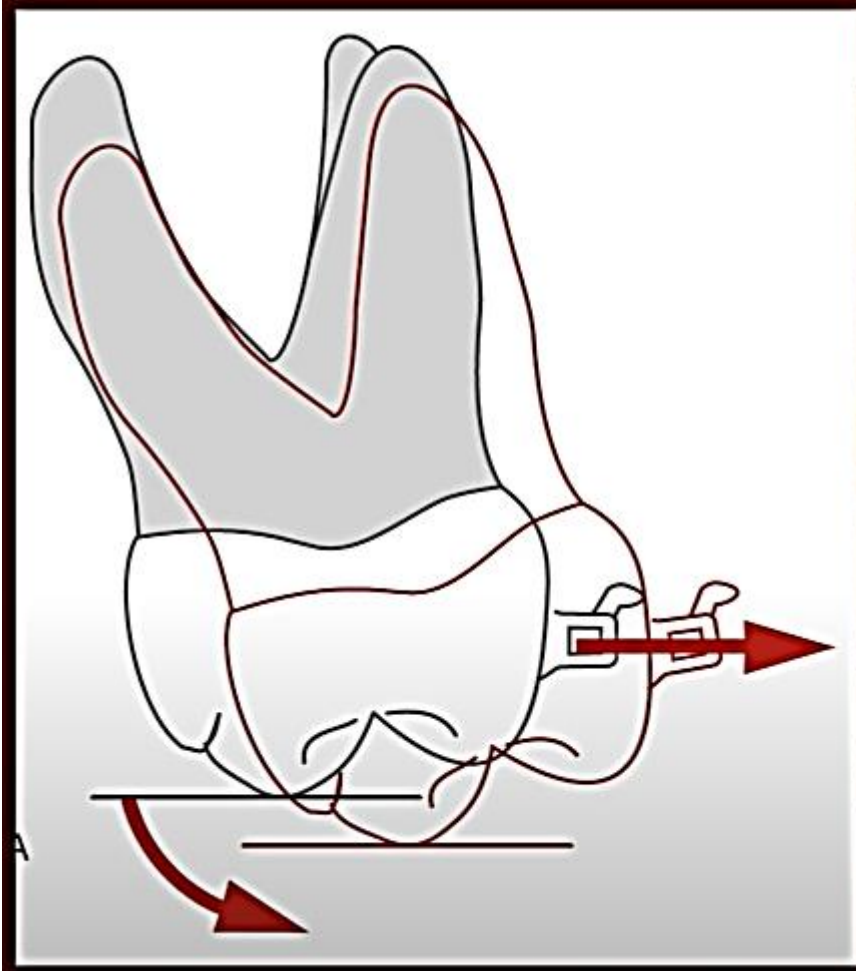


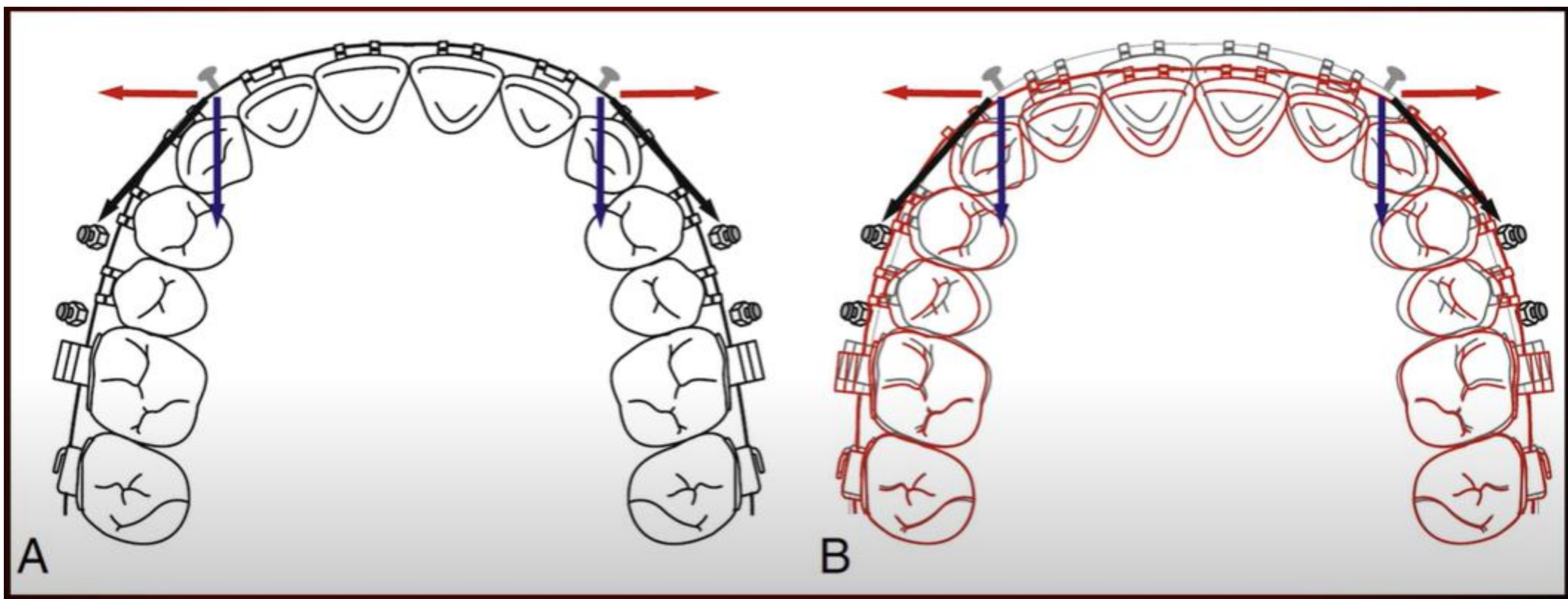






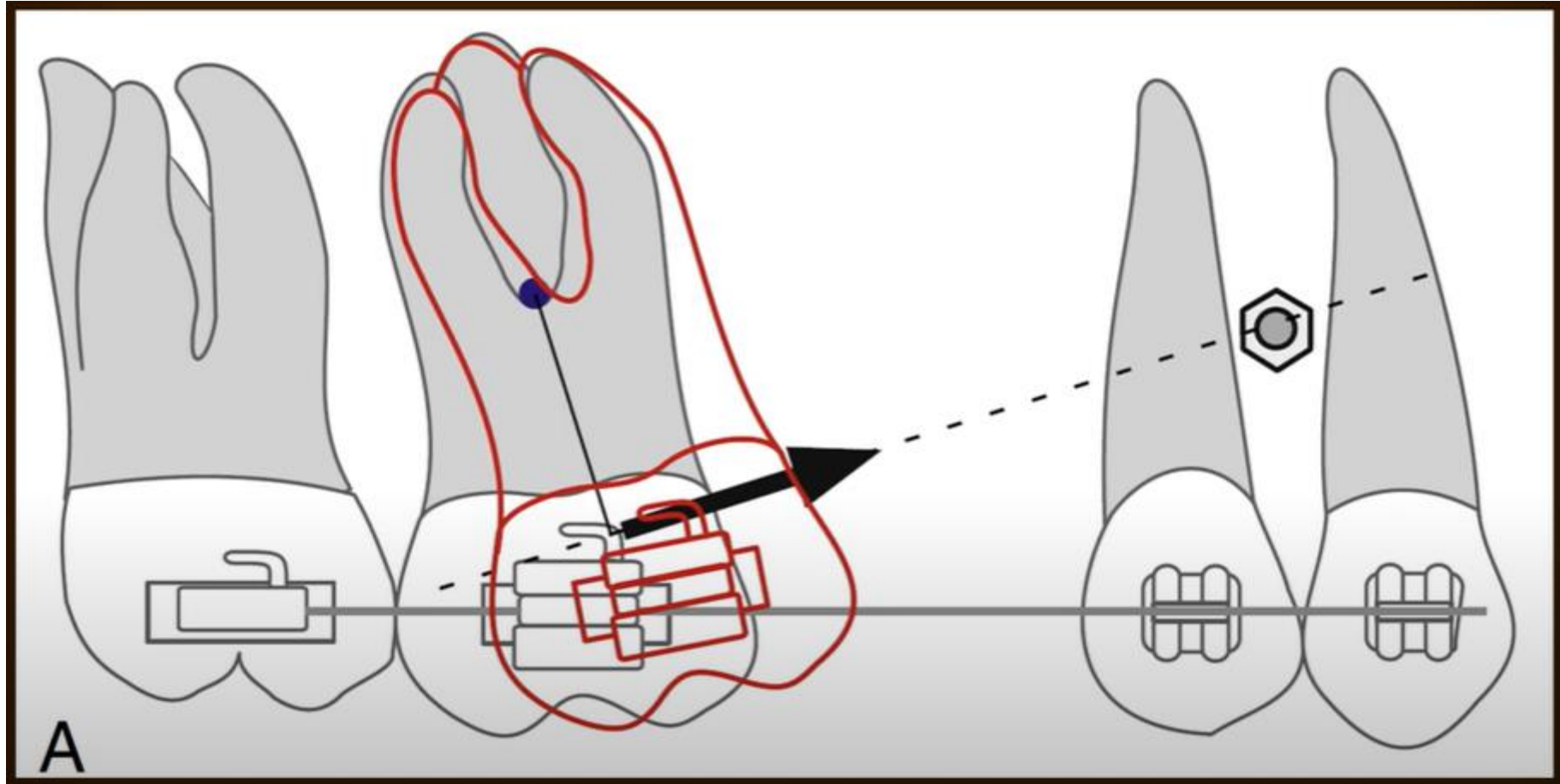


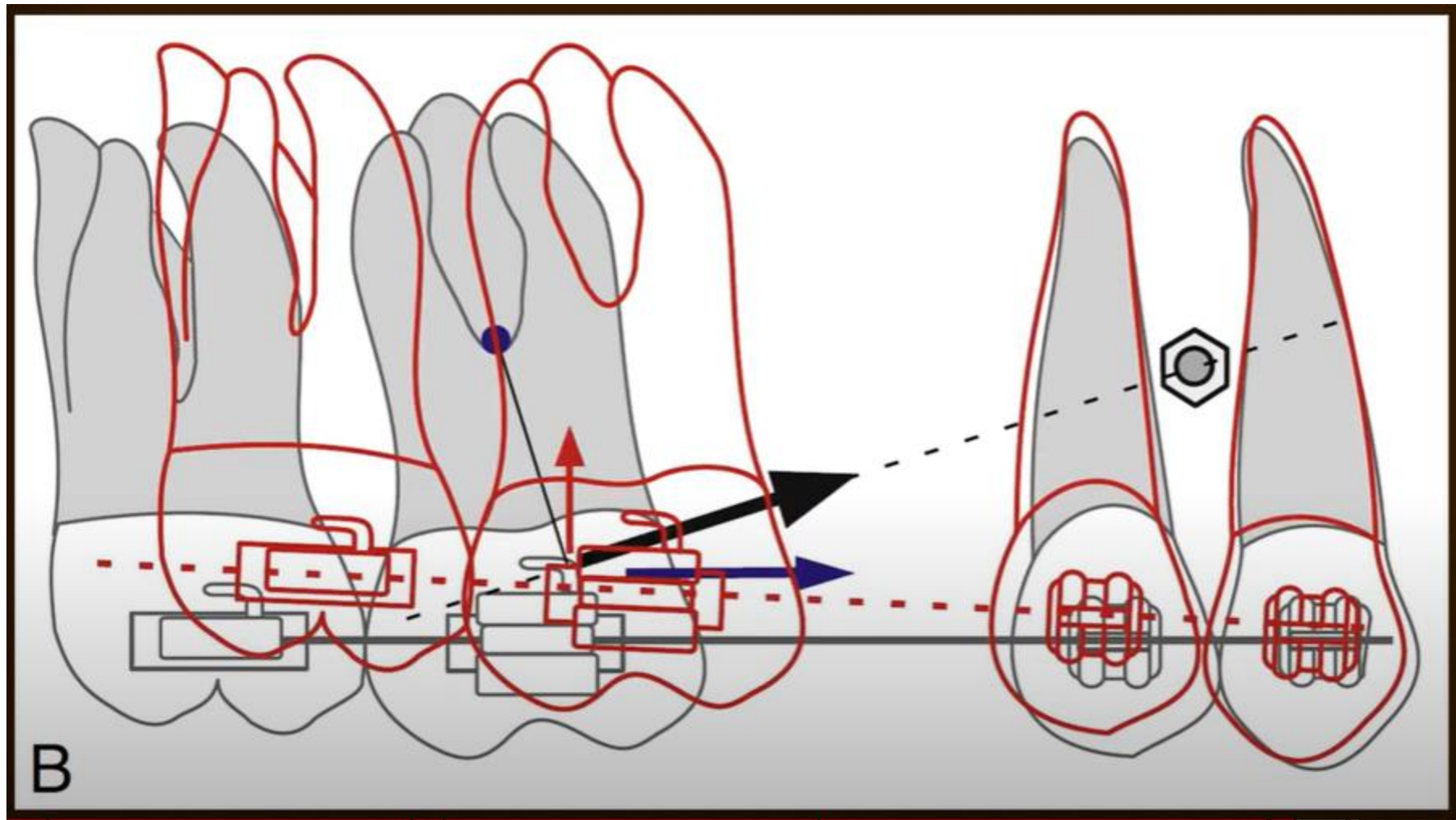


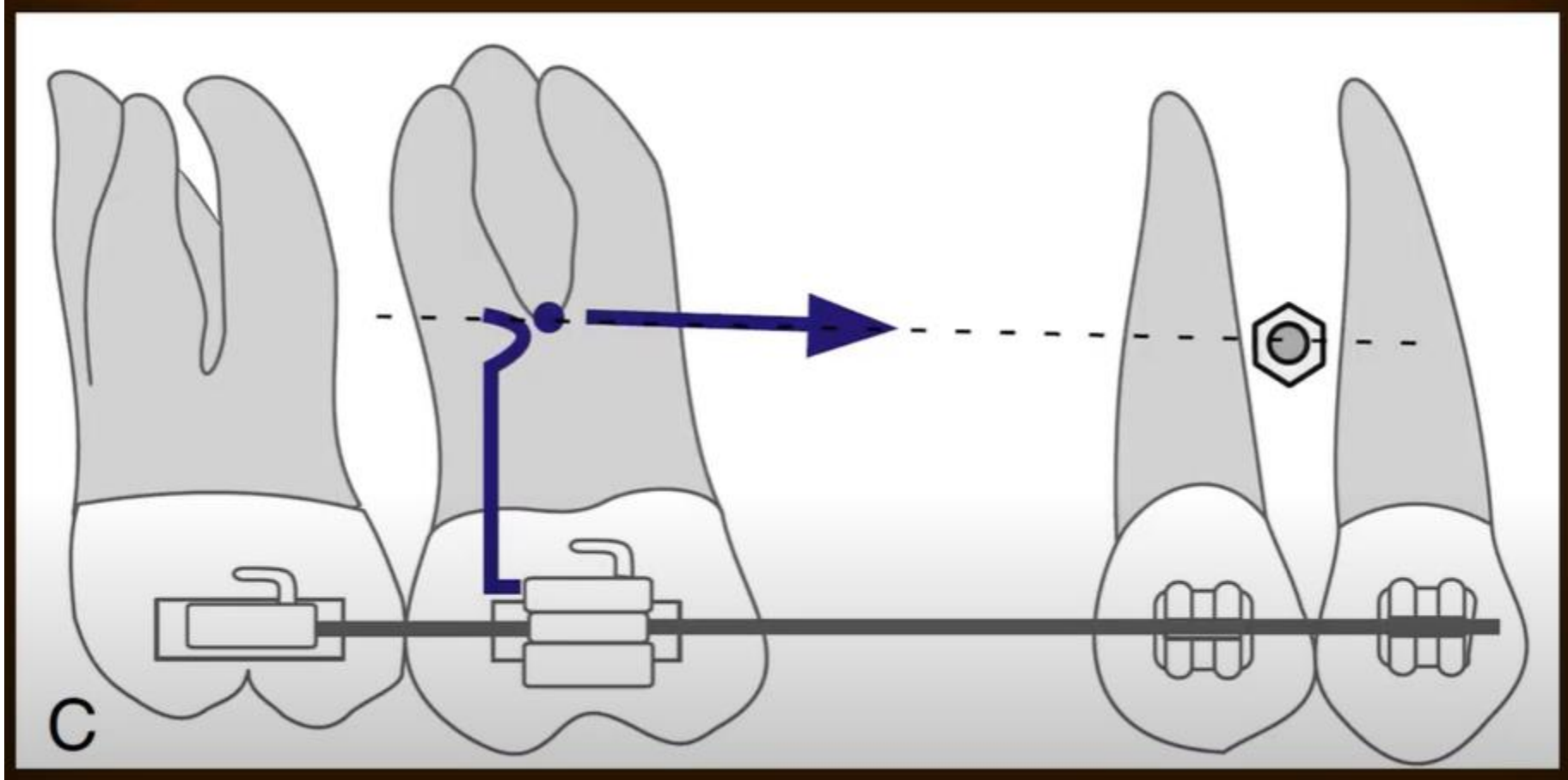




# Molar Protraction

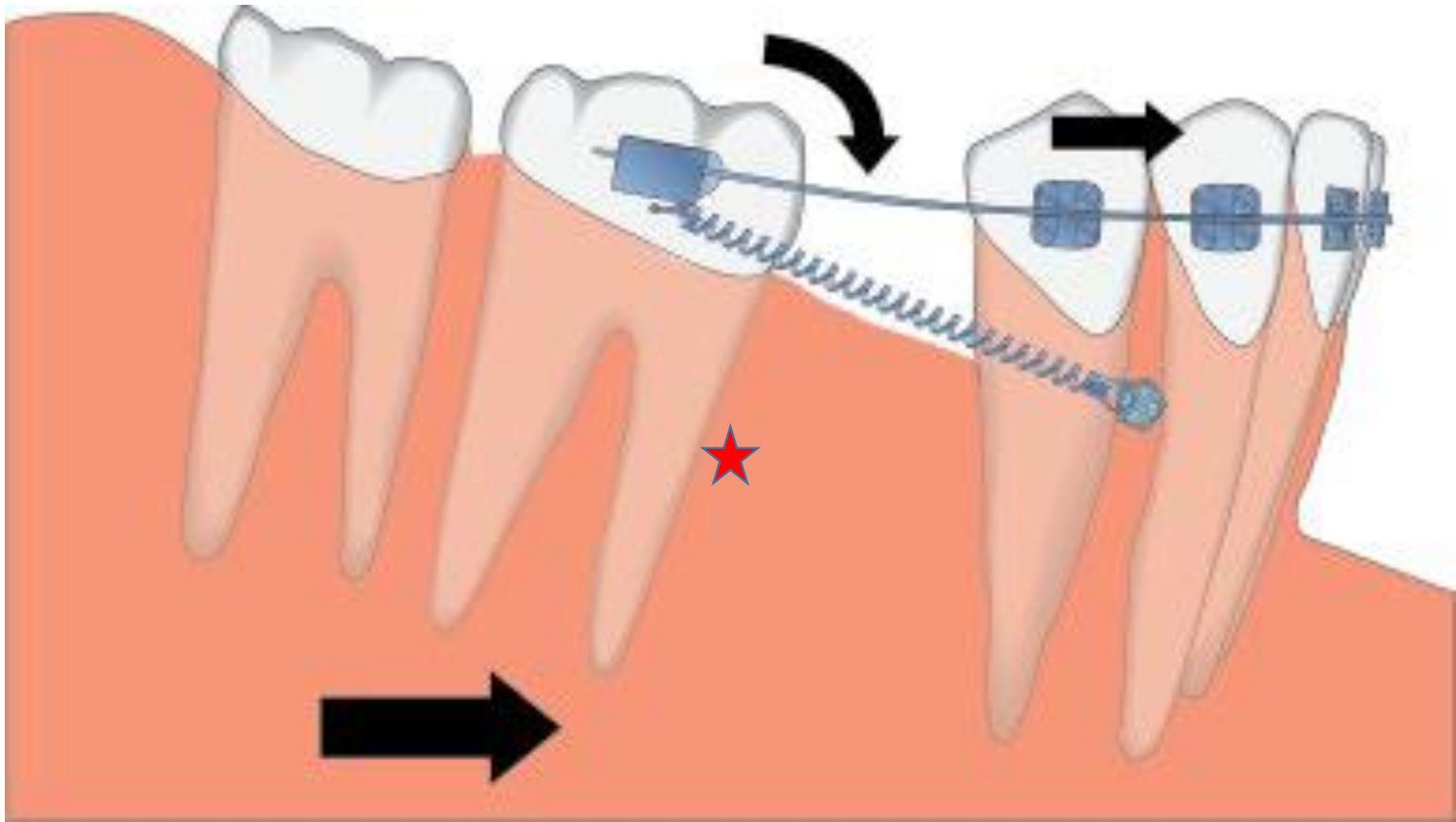


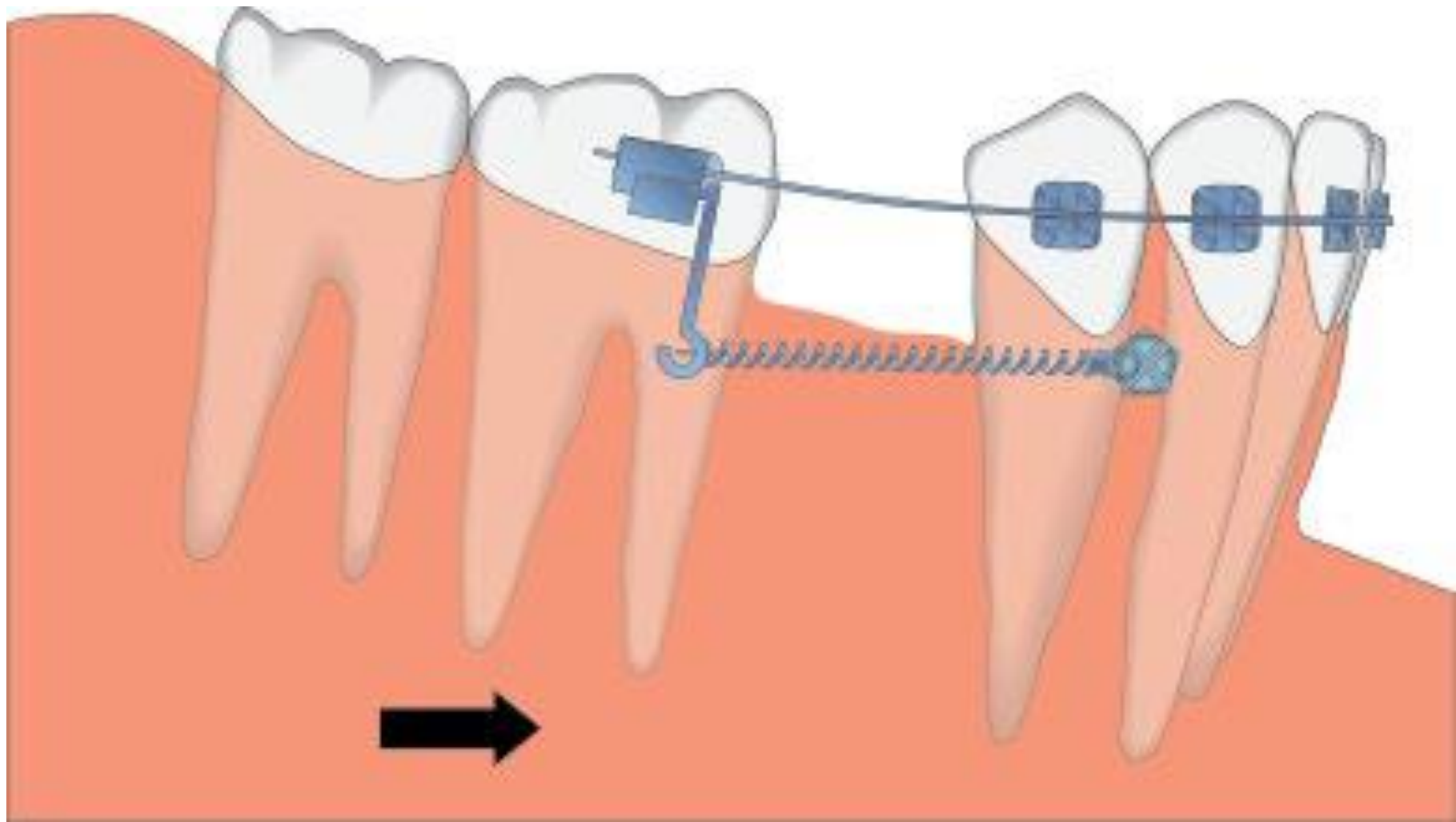














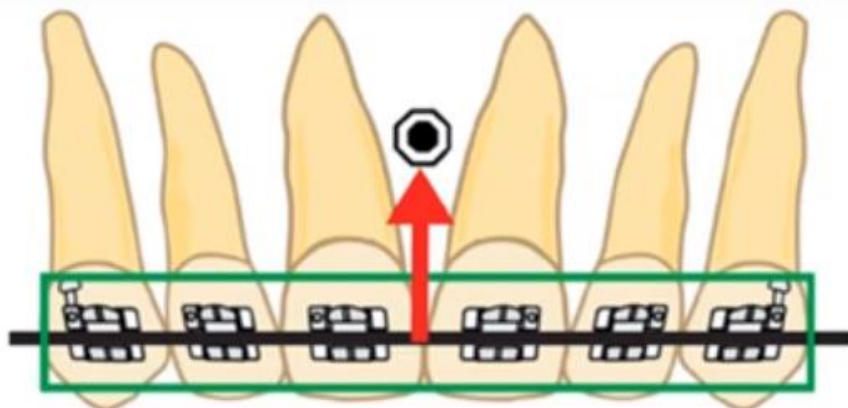


Anterior intrusion

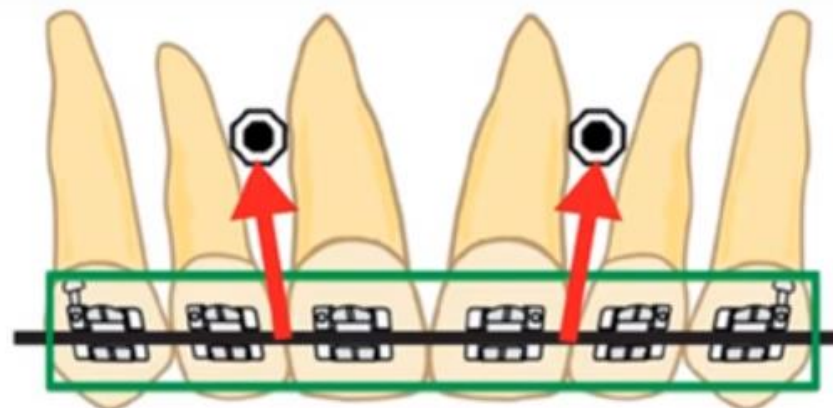




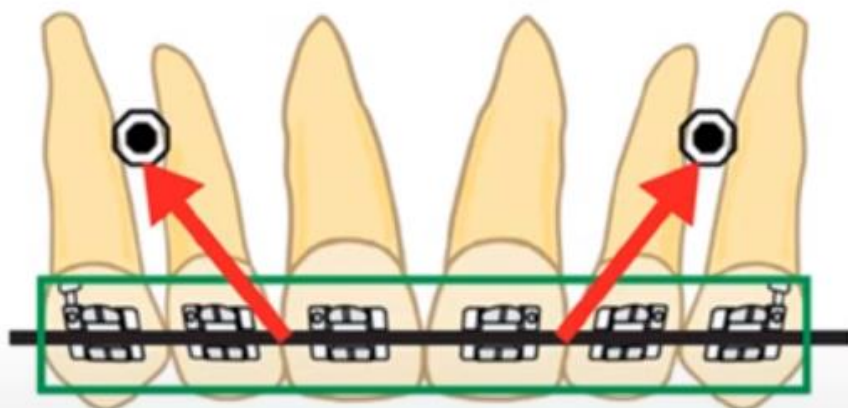
A



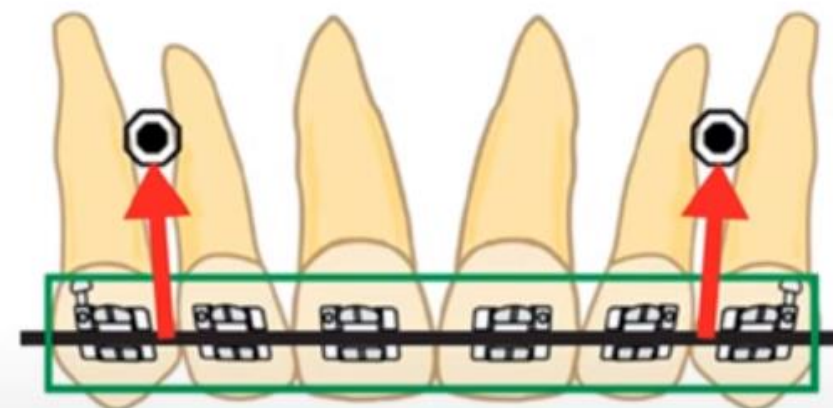
B



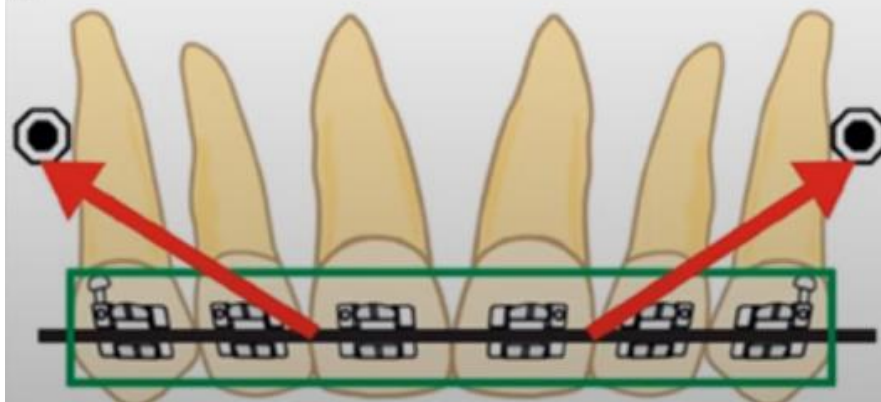
C



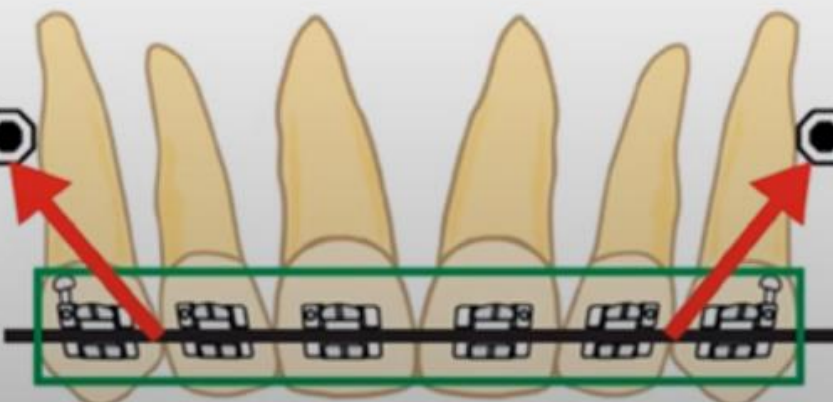
D



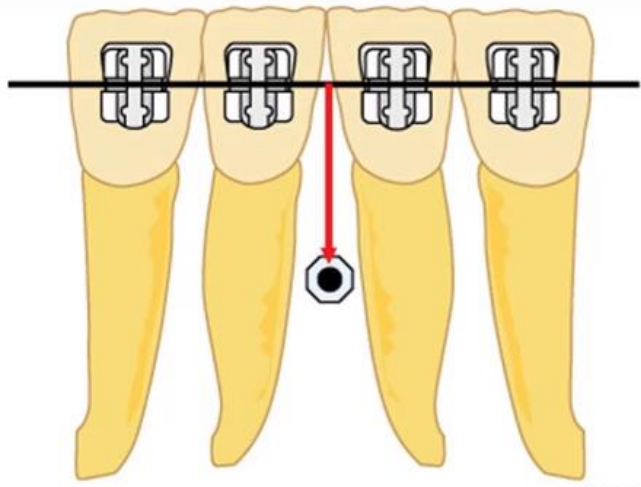
E



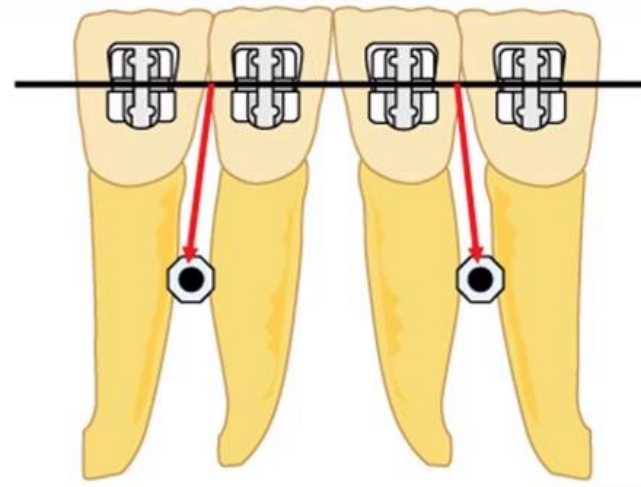
F



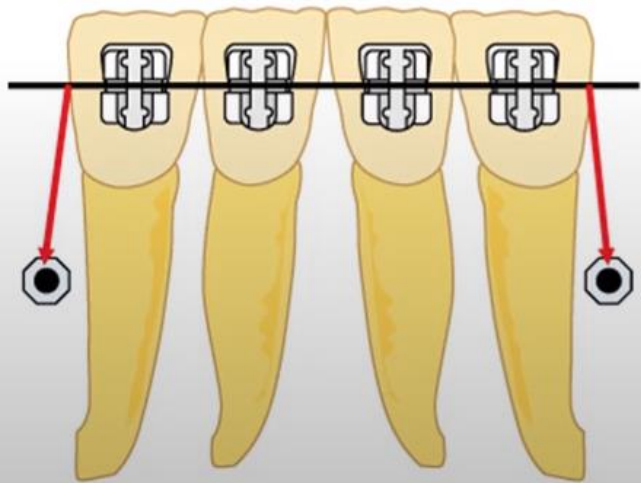




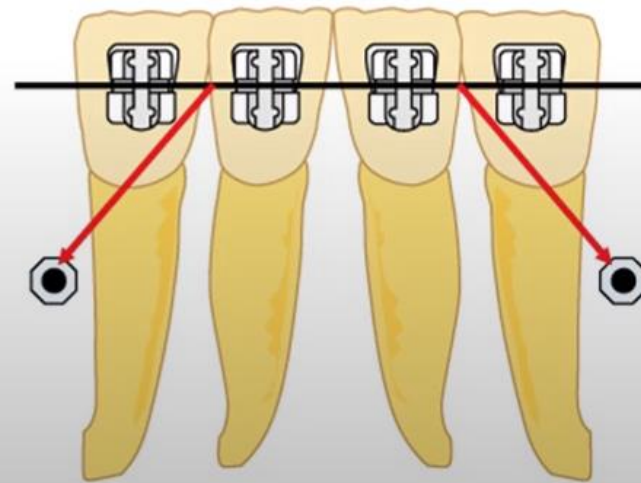
(1A)



(1B)



(1C)



(1D)

posterior intrusion

